

FOR USE ONLY
IN
THE LIBRARY

Chinese Export Porcelain
and Works of Art

London
Monday, 22 April 1991 at 11.00 a.m.



CHRISTIE'S



[101] detail of one of two

99

A PAIR OF HARDSTONE INLAID PANELS, each inset with jade on a black ground, one depicting a composite fruiting and flowering pomegranate and peony branch, the other a peach branch, each with an inlaid mother-of-pearl bat in the corners and a carved inscription (slight damage), 19th Century

57cm. x 90cm. approx., framed and glazed

(2)

(illustrated on facing page)

£1,200-1,800

100

A SET OF FIVE ENGRAVINGS illustrating the military campaigns of the Emperor Qianlong against the Mongols, each depicting a battle scene involving cavalry and infantry in mountainous landscapes beneath an inscription (small stains and damages), c. 1789

each approximately 87cm. x 50.5cm.

(5)

Designed by the court artists Kia Ts'uan and Li Ming, the plates illustrate the Formosan campaigns of 1786-1788 and are inscribed by poems dated 1789, cf. *Gravures des conquêtes de l'Empereur de Chine K'ien-Long au Musée Guimet*, p. 43ff.

(illustrated on facing page)

£1,000-1,200

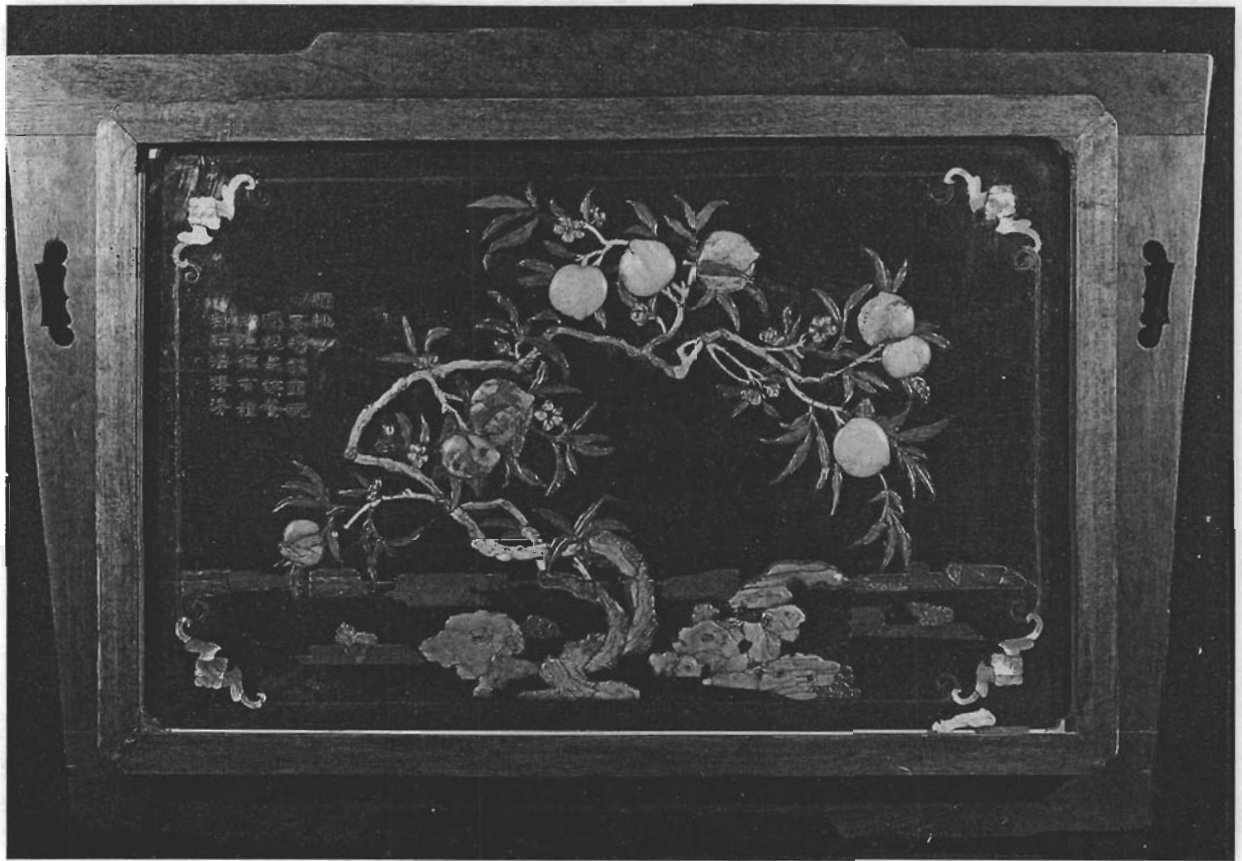
101

TWO LARGE HANDSCROLLS painted in ink and colours on silk depicting battle scenes, one with infantry and cavalry in bright blue waistcoats armed with guns and bearing striped and astrological standards attacking a settlement of huts with cannons and driving off other soldiers armed with spears, the other similar with cavalry charging across bridges and through encampments and among fortifications surrounded by trees and mountains (minor wear), 19th Century

(2)

approx. 305cm. x 137cm.

£8,000-12,000



[99]



[100]