

The Property of a European Private Collector

Volume I Furniture and Decorative Arts

FOR USE ONLY
IN
THE LIBRARY

SOTHEBYS

London Tuesday 16th April 1996

462

A laque-burgaute chess and jaquet game with accessories

the box opening out to reveal a chessboard on the exterior inlaid with individual mother-of-pearl panels decorated with boats, flowers, animals or buildings, the interior inlaid with two central medallions surrounded by 24 triangular panels decorated with fruiting tree motifs, with a complete set of carved wood chessmen, 40 jaquet counters and 2 dice, *chips to the lacquer and inlay, several of the counters with some damage*

64 by 57cm; 25½ by 22½in (Qty)
£200-300

463

A Chinese Ma Jong set

the pieces made of bamboo-backed ivory, kept in a small hardwood chest with five drawers

the chest 24cm; 9½in across (Qty)
£100-150

464

A pair of red overlay Peking bottle vases, Qing Dynasty, 19th century

the globular body of each carved with a continuous scene of a tiger striding over crashing waves towards knarled boughs rooted in rockwork, the tall slightly flaring neck with a dragon

35.5cm; 14in (2)
£800-1,200

465

A pair of Chinese School paintings, Qing Dynasty, 19th century

figures in gardens, oil on canvas
45 by 58.5cm; 17¼ by 23in

Provenance:

Christie's, London, 29 April 1977, lot 465

£1,500-2,000

466

A pair of Chinese School paintings, Qing Dynasty, 19th century

of figures in a room; and figures in a garden, oil on canvas

45 by 58.5cm; 17¼ by 23½in (2)
£1,500-2,000

467

A Chinese painting, Qing Dynasty, 19th century

depicting numerous figures, including mounted archers, gathered in and outside a palace, watercolour and gouache

91 by 168cm; 35¾ by 66in
£300-400

468

Two Chinese three-fold hardstone and ivory inlaid screen, Qing Dynasty, 19th century

one depicting a scene of two huntsmen on horseback in a landscape shooting at two animals, the chase being watched by onlookers going about day-to-day tasks, *some inlay missing*; the other with figures in a carriage in a landscape with a river and trees

87.5 by 98cm; 34½ by 38½in; and 81 by 102.5cm; 32 by 42½in (6)
£500-700

469

A Chinese six-fold inlaid screen, Qing Dynasty, 19th century

inlaid with hardstones and ivory on a black lacquer ground depicting figures in a landscape

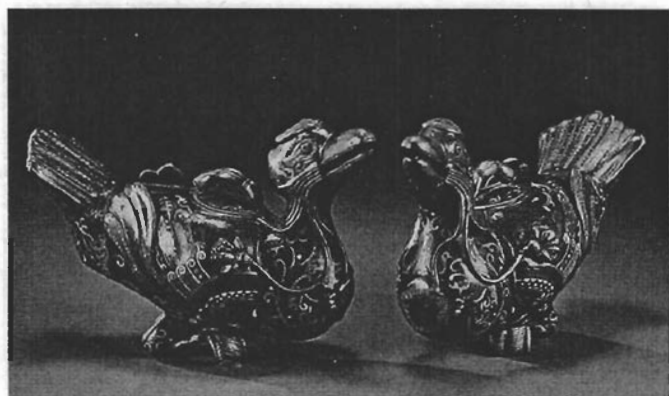
152 by 183cm; 60 by 72in
£1,000-1,500

470

A quantity of Oriental paintings and plaques, 19th century

comprising: three Chinese porcelain mounted plaques with figures; another Chinese porcelain mounted plaque with two figures and a boy riding a water buffalo; two Chinese reverse glass paintings with figures; and a Japanese black lacquered plaque depicting in ivory a maiden immortal riding a crane

the largest 70 by 91.5cm; 27½ by 36in (7)
£200-300



459



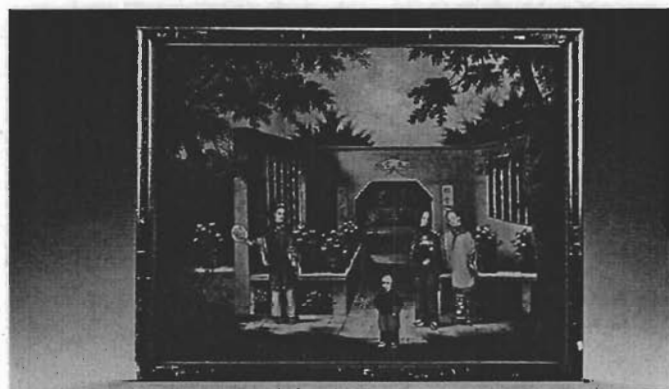
460



464



465 (a pair)



466 (a pair)



467



468 (one of two)



469